

PANEL SYSTEMS CASE STUDY



PROJECT: CAPITAL GROUP OFFICE

LOCATION: IRVINE, CA

BLDG USE: INVESTMENT OFFICE

COMPLETION: FALL 2007

PRODUCTS: CUSTOM FORMED & WELDED ARCHITECTURAL ALUMINUM 5052 H2 .125" WALL PANELS, COLUMN COVERS & ALUMINUM 6005 T5 SUNSHADES

ARCHITECTS: PEI COBB FREED & PARTNERS

CUSTOMER: WALTERS & WOLF, INC.

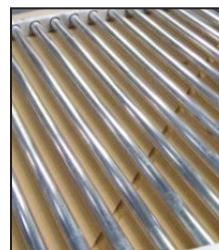
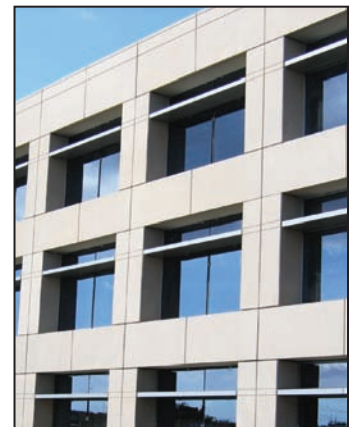
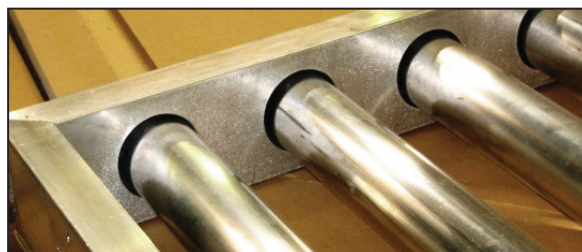
Sitting on over 23 acres of land the 650,000-square-foot Capital Group's Irvine campus is among one of the largest commercial projects completed in Orange County in 2007.

Sapa contributed to this magnificent structure by supplying custom 5052 H2 .125" aluminum architectural panels, custom column covers and a unique 6005 T5 sunshade system using 2 1/2" Schedule 40 Pipe.

Through the life of the project Sapa's Project Manager and innovative team were ready and willing to get the job accomplished. Planning, designing, engineering, extrusion, coating, and install preparation were all done here at Sapa.

When the architects at Pei Cobb Freed & Partners requested a sunshade that was unlike any other, Sapa teamed together to develop a modified aluminum 6005 T5 sunshade that would fit the building perfectly. The results were impeccable and with Sapa's 3-Coat Champagne Metallic XL paint, the final product was exactly what was expected.

Sapa would like to thank Pei Cobb Freed & Partners and Walters & Wolf for this exciting opportunity to develop such a brilliant and impressive structure. Sapa is truly proud!



Sapa Profiles, Inc.

Fabricated Components

Address 7320 N.E. 55th Avenue, Portland, OR 97218

Tel 503-802-3467 Toll Free 800-547-0790 Fax 503-802-3484

Email Sapa-inc@sapagroup.com Website www.sapagroup.com/us/profiles