

# RAILING SYSTEMS CASE STUDY

PROJECT: THE CASEY CONDOMINIUMS PRODUCTS: CUSTOM ALUMINUM RAILING SYSTEM

LOCATION: PORTLAND, OR

ARCHITECTS: GBD ARCHITECTS

BLDG USE: RESIDENTIAL & RETAIL

CUSTOMER: HOFFMAN CONSTRUCTION

COMPLETION: DECEMBER 2007

LEED™ CERTIFICATION: PLATINUM

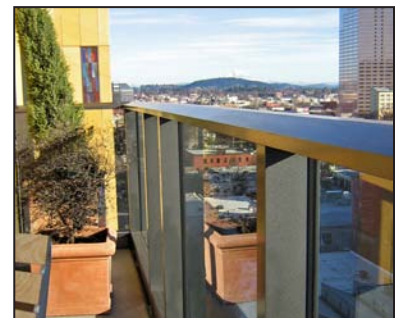
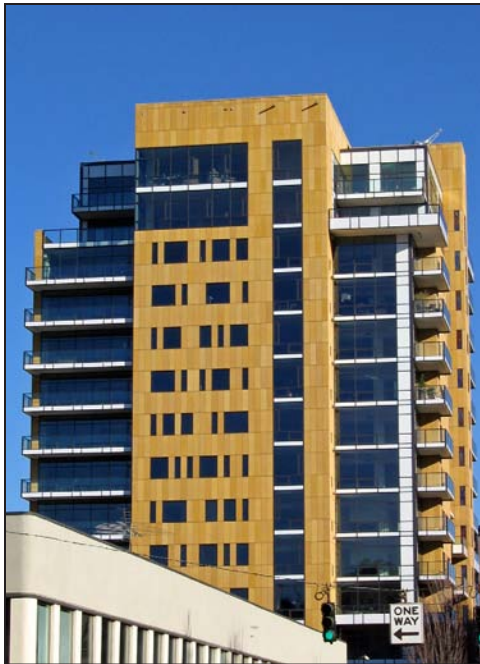
On the corner of 12th and Everett in Portland's pearl district, stands one of Portland's newest condominiums. The Casey Condominium is a unique residential building with 61 urban homes. Each home measures approximately 2,000 sq. ft. and is designed with a sprawling balcony.

GBD Architects designed this vibrant and dynamic structure, while Hoffman Construction chose Sapa Railing Systems to match the architects objective.

The Casey railing is a highly customized system combining three types of infill (glass, panels, and interior panels) and a three coat commercial grade Charcoal paint. All design, drawings, die creation, extrusion, project management, engineering, custom coating and install coordination was done in-house.

The biggest challenge during this project was finding a railing panel that matched the existing exterior Starphire fritted glass panels. Keeping value engineering in mind, our project manager chose to use a composite panel system instead of the expensive alternative. The match was seamless. Both the architect and Hoffman Construction were utterly pleased.

Sapa is also particularly proud to announce that our "green" aluminum railing system is contributing to the Casey becoming the first LEED™ Platinum certified high-rise residential building in the United States!



Sapa Profiles, Inc.  
Fabricated Components

Address 7320 N.E. 55th Avenue, Portland, OR 97218

Tel 503-802-3467 Toll Free 800-547-0790 Fax 503-802-3484

Email Sapa-inc-rail@sapainc.com Website www.sapagroup.com/us/profiles/railings

Proud to be nominated as  
one of the *Daily Journal of  
Commerce's* Top Projects!

