

RAILING SYSTEMS CASE STUDY

PROJECT: WILLAMETTE UNIVERSITY

LOCATION: SALEM, OR

BLDG USE: STUDENT HOUSING & FACILITIES

COMPLETION: SUMMER 2007

PRODUCTS: CUSTOM RAILING, TEMPERED GLASS, CABLE INFILL & POOL FENCING

ARCHITECTS: ZIMMER GUNSUL FRASCA
CUSTOMER: HOFFMAN CONSTRUCTION

LEED™ CERTIFICATION: GOLD

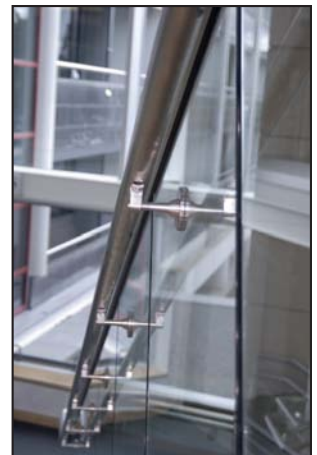
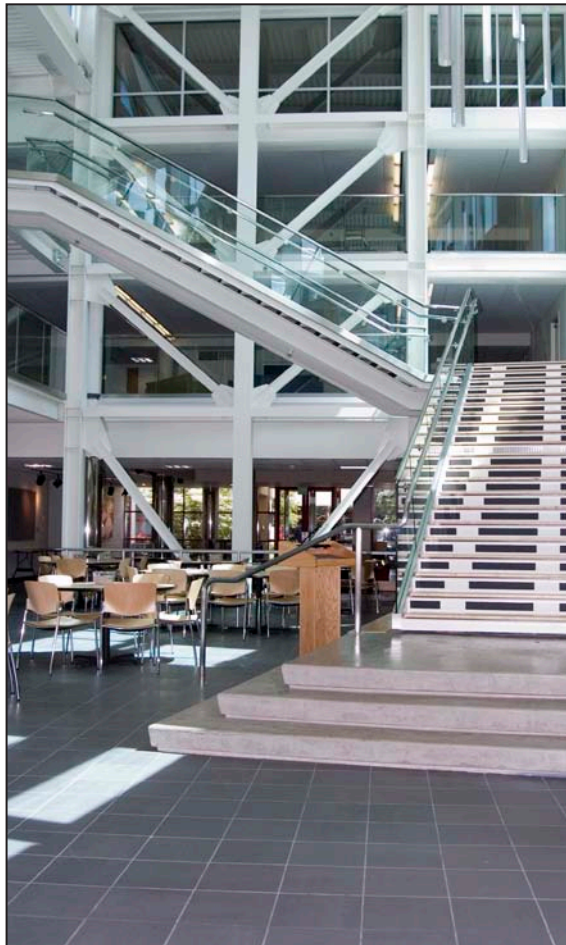
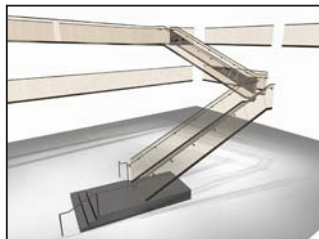
Willamette University is home to 2,000 students where over half of them were among the top 10% of their high school class. Willamette University students are part of an elite group and because of this they deserve the best accommodations possible. This is why Hoffman Construction requested Sapa Railing Systems for the Kaneko Commons \$14 million addition.

Hoffman benefits from Sapa's capabilities to perform all work in-house. This includes extrusions, coating, anodizing, and all fabrication.

Sapa Railing Systems exceeded ZGF's visions by designing and providing materials for the grand staircase glass railing, interior balcony glass railing, exterior balcony cable railing, interior ADA approved ramp railing and a pool picket fence.

The grand staircase posed a challenge for Sapa's team due to the necessity of precise handrail measurements to accommodate a detailed glass system. Sapa's team quickly overcame this challenge and the result is a railing system full of graceful lines that created a feeling of open boundaries.

Sapa Railing Systems helped to target this project toward a Silver LEED certification by providing "green" material.



Sapa Profiles, Inc.
Fabricated Components

Address 7320 N.E. 55th Avenue, Portland, OR 97218
Tel 503-802-3467 Toll Free 800-547-0790 Fax 503-802-3484
Email Sapa-inc-rail@sapainc.com Website www.sapagroup.com/us/profiles/railings

Proud to be nominated as one of the *Daily Journal of Commerce's* Top Projects!

