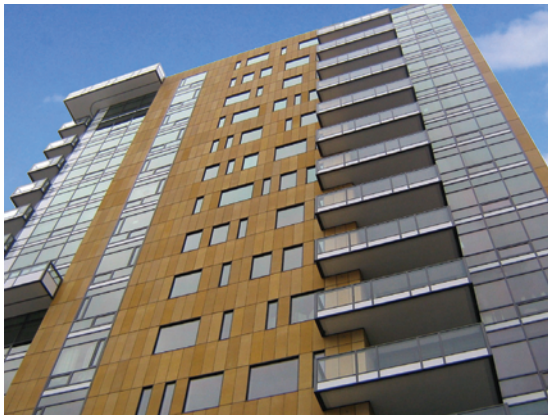


# Sapa's Contribution to LEED®



The Leadership in Energy and Environmental Design (LEED) Green Building Rating System™ encourages and accelerates global adoption of sustainable green building and development practices through the creation and implementation of universally understood and accepted tools and performance criteria.



The Casey Condominiums in Portland, Oregon was the first LEED platinum-certified condominium in the United States. Sapa Profiles aluminum railing contributed to the Casey's LEED score.

The built environment has a profound impact on our natural environment, economy, health and productivity.

In the United States buildings account for:

- 65%** of electricity consumption
- 36%** of energy use
- 39%** of greenhouse gas emissions
- 30%** of raw materials use
- 30%** of waste output

## How can Sapa help?

How Sapa products can contribute to your projects LEED certification:

## Why is LEED important?

- Conserve natural resources
- Reduce operating costs
- Enhance occupant comfort and health
- Minimize strain on local infrastructure
- Enhance asset value and profits
- Contribute to overall quality of life

## Aluminum Facts:

- Extremely easy to maintain and corrosion-resistant
- Light to transport which leads to reduced fuel costs
- Recyclable and reusable

**Credit 2.1** Construction Waste Management, Divert 50% from Disposal

**Credit 2.2** Construction Waste Management, Divert 75% from Disposal

**Credit 4.1** Recycle Content 10%

**Credit 4.2** Recycle Content 20%

Use materials with recycled content such that the sum of post-consumer recycled content plus one-half of the pre-consumer content constitutes at least 10% or 20% of the total value of the materials in the project.

**Credit 5.1** Regional Materials 10% Extracted, Processed & Manufactured

**Credit 5.2** Regional Materials 20% Extracted, Processed & Manufactured

Use building materials or products that have been extracted, harvested or recovered, as well as manufactured, within 500 miles of the project site for a minimum of 10% or 20% of the total materials value.